

AT-UHD-CLSO-612 Updating Guide

New firmware to update, fix, or change functionality of products becomes available occasionally. Atlona has made this as easy as possible for updating on the job by simply downloading from Atlona.com and installing through a mini USB to USB A cable.

NOTE: Only use a Windows computer to update.

I. Requirements:

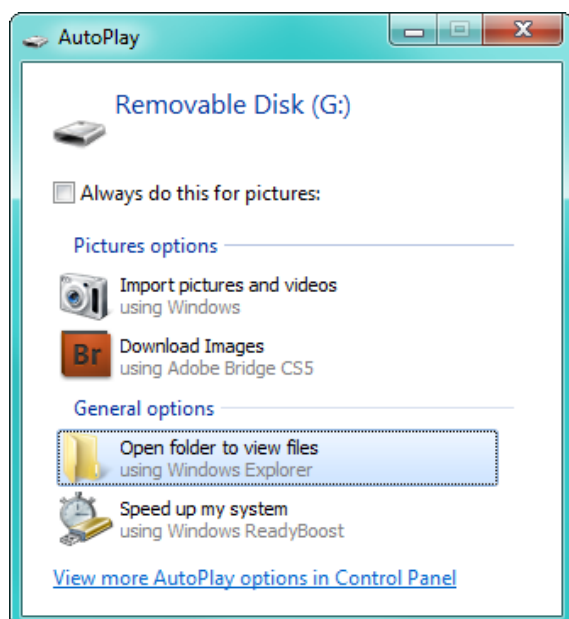
- a. AT-UHD-CLSO-612
- b. Desktop PC or Laptop PC w/ USB A port
- c. Mini USB to USB A cable
- d. Firmware (downloadable from atlona.com)

II. Installation:

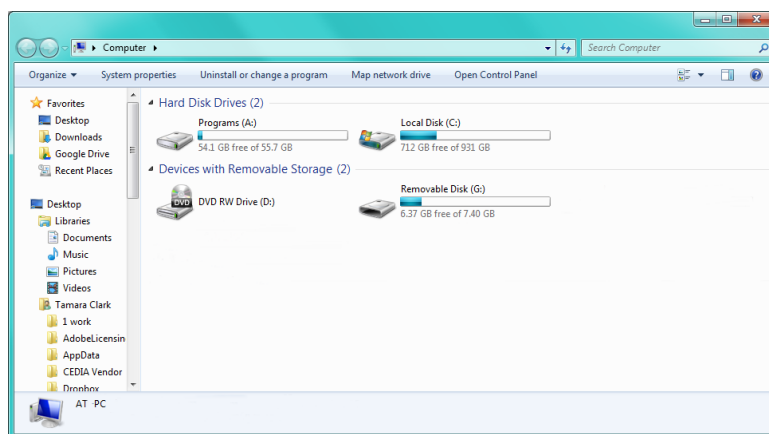
- a. Unplug the power from the CLSO
- b. Connect CLSO to a computer using the mini USB to USB A cable
- c. Press and hold the input key*
 - *Press input 1 to update the MCU firmware
 - *Press input 2 to update the OSD firmware
- d. Plug the power back into the CLSO (while still holding the input key)
- e. Continue holding the input key for 5 seconds then release it

III. Firmware Upgrade:

- a. Click the option, "Open folder to view files" (if AutoPlay runs)



If the computer does not auto detect the connection, open "My Computer" and select the USB drive.



- b. Place the latest firmware in the folder
- c. Remove the USB cable from the CLSO and computer
- d. Unplug the power cable from the CLSO
- e. Press and hold the input 6 key while plugging the the power supply back in
- f. Release the input 6 key after 5 seconds
 - The buttons may flicker for a few seconds after the reset
- g. Repeat the process for any other firmwares that may be needed